



Profiles Design Aspirer®

PDA

SLIM steel doors and windows system

SLIM | ENERGY | ART

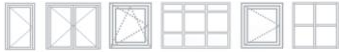
New composite steel doors and windows



SLIM thermally broken steel windows and doors

In architecture, the same style and function of doors and windows have lasted for decades. Stylist people pursue hard in the innovation of doors and windows, each manufacturer is in the union of the many factors such as material, performance, appearance also lack something to say. Until SLIM comes...

SLIM Steel Door and Window System,
Extremely thin cold-formed steel profiles,
Let the "face" of the profile,
To become a beautiful "line".
Make the living space transparent and bright,
Let us be more free to bask in the sun.



Wrought iron and steel windows, first created in Europe in the late 16th century, are made by hand in blacksmith's workshops. They are rare in production and expensive in price. Therefore, wrought iron and steel windows could only be used in churches, city halls, foreign trade ports, official residences and other buildings that had been symbols of dignitaries throughout the 18th century.

In the late 19th and early 20th century, the cities of Europe more mass destruction of the fire broke out, steel fire was different, it's very refractory, so the government called for extensive use of steel doors and windows to replace the wooden doors and windows, so the steel window began to popular in Europe and the earth.



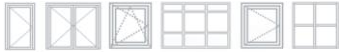
With the introduction of Western civilization into China, steel doors and windows from the West were introduced into China in 1911. After the founding of new China, Shanghai, Beijing, Tianjin and other places steel doors and windows enterprises built a larger steel doors and windows production base, but our country in the production of profile processing technology, at present or lag behind a few advanced manufacturers in Europe.



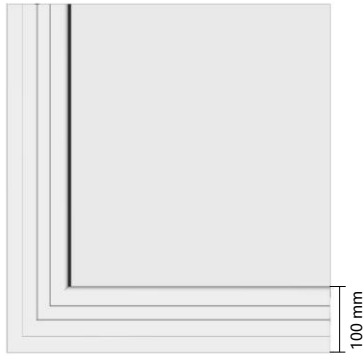
PDA (Profiles Design Aspirer International Company) is an international operating company in steel doors and windows product system development and procurement.

PDA has formed strategic cooperative relations with international steel profiles manufacturer voestalpine Profilform (China) Co. Ltd and fire-resistant glass manufacturer AGC, so as to make the product system more comprehensive and extensive.

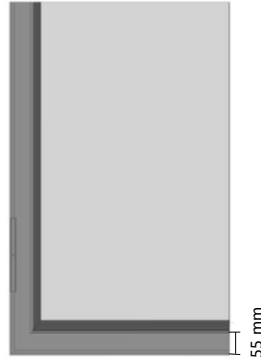
SLIM65 thermally broken doors and windows profiles are produced jointly by PDA and voestalpine Profilform (China) Co.Ltd, which are researched and designed by PDA. SLIM65 steel profiles are adopted advanced cold formed steel profiles equipments to produce profiles, ensuring the accuracy of steel profiles, and also SLIM65 system uses thermally broken technology to overcome the poor thermal insulation of traditional steel windows, while retaining the advantages of high strength steel doors and windows, while the PDA develops a variety of profiles and styles to realize the designers' rich imagination.



SLIM steel window VS Aluminum alloy window



Aluminum alloy window

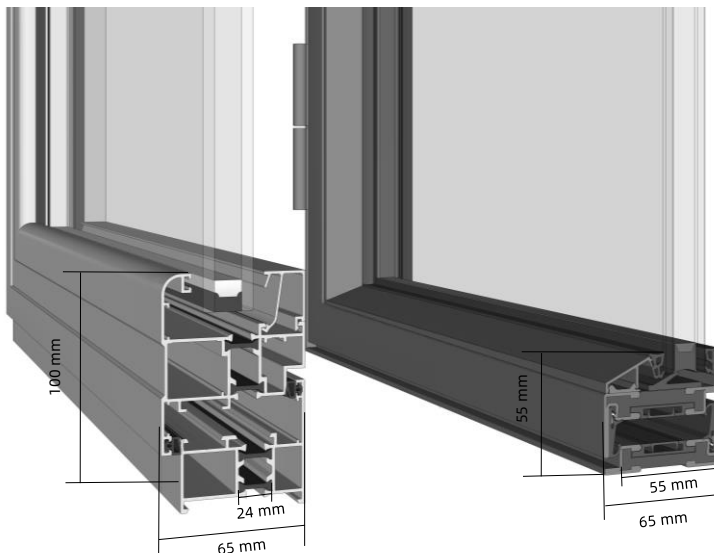


PDA-SLIM steel window

Aluminum alloy window :
edge joint, surface 100mm

SLIM steel window :
seamless welding, surface 55mm

Whether it is sealing or aesthetic, the SLIM steel window system is more advantageous



Aluminum alloy window

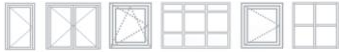
PDA-SLIM steel window

Name	Surface	Thickness	thermally broken structure
Aluminum alloy window	100mm	65mm	24mm
SLIM steel window	55mm	65mm	55mm

Compared with the aluminum alloy window, the steel window can be seen more slender, the thermally broken structure is wider, and the energy saving effect is better

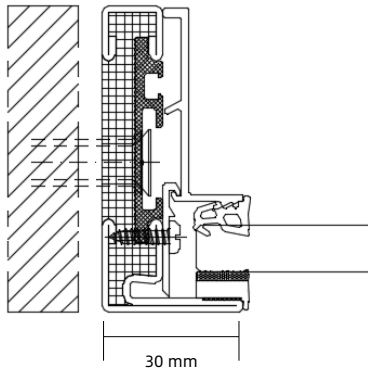
Residential & Commercial - Windows



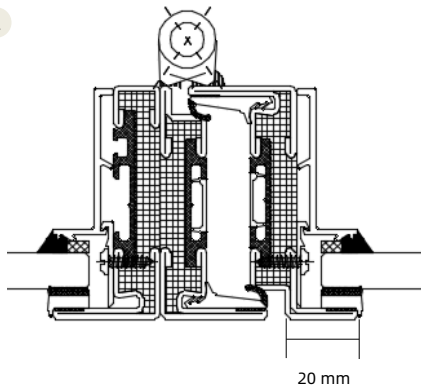


Residential & Commercial-Partitions & Doors

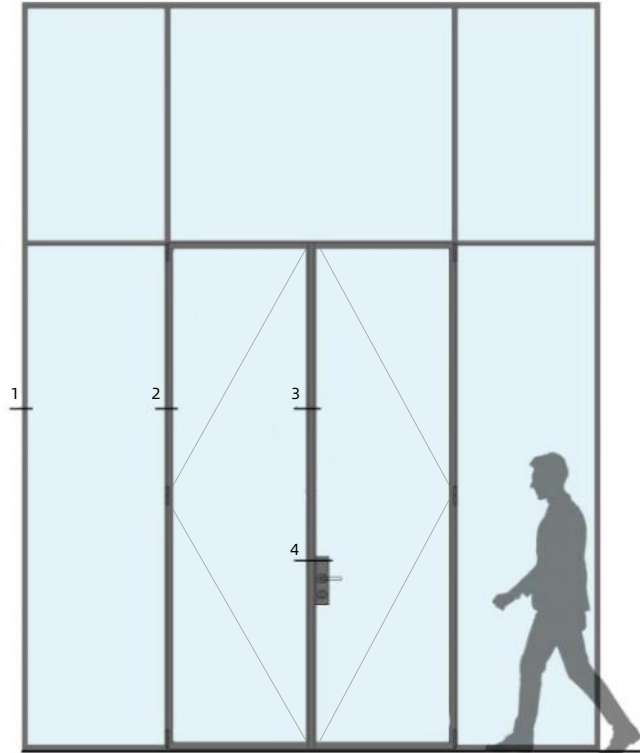
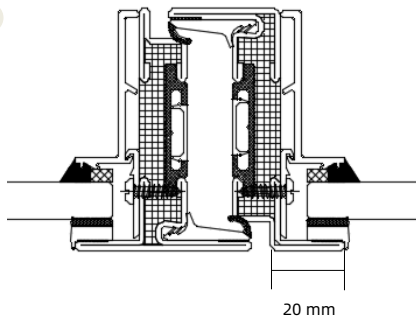
1



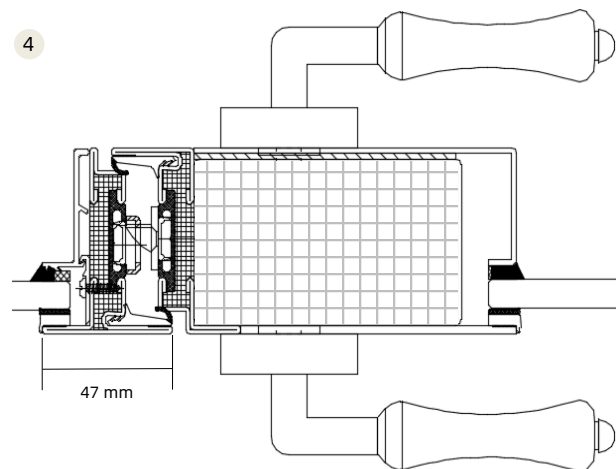
2



3



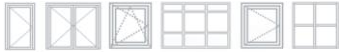
4



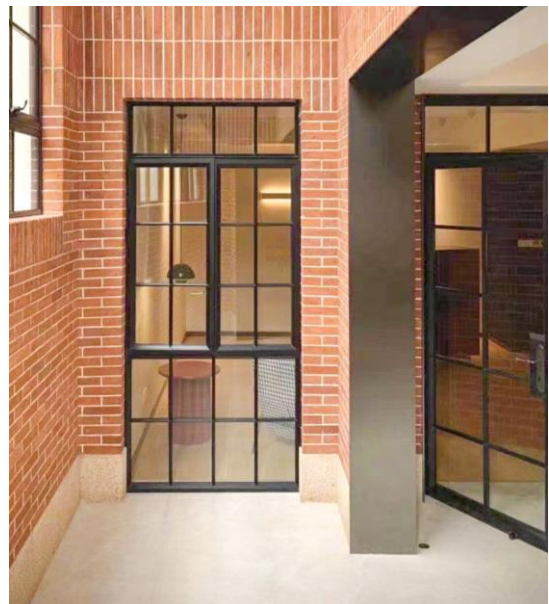


Residential & Commercial-Partitions & Doors



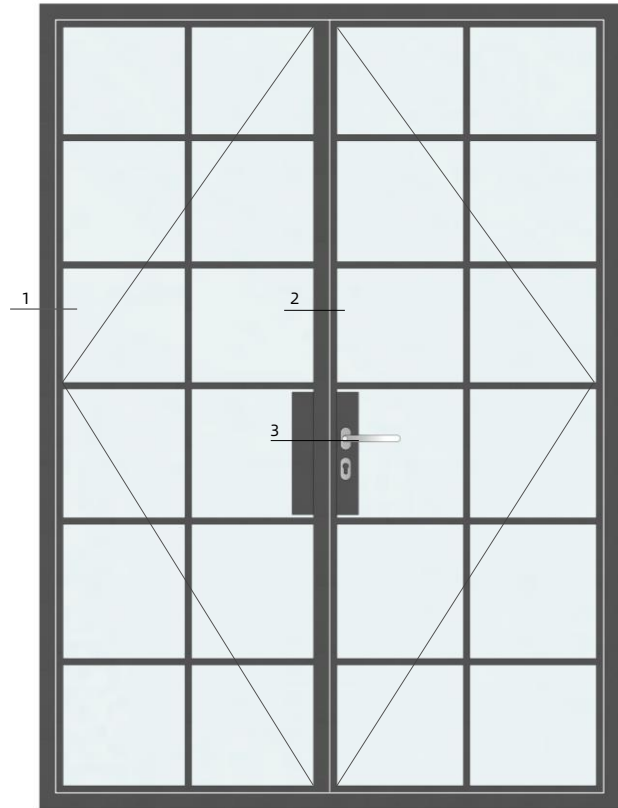
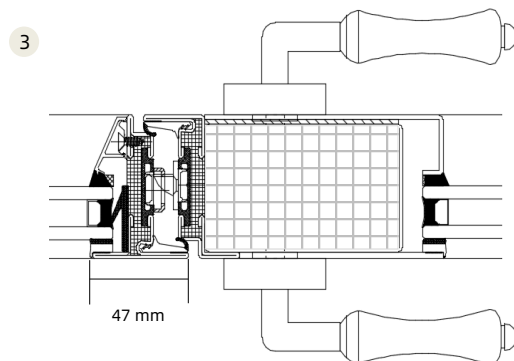
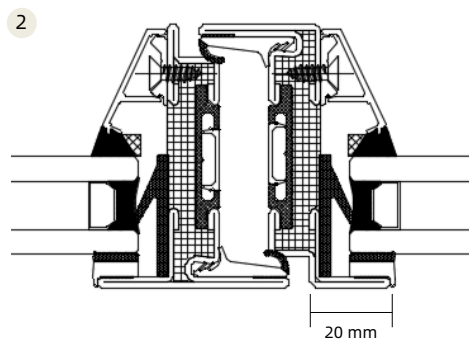
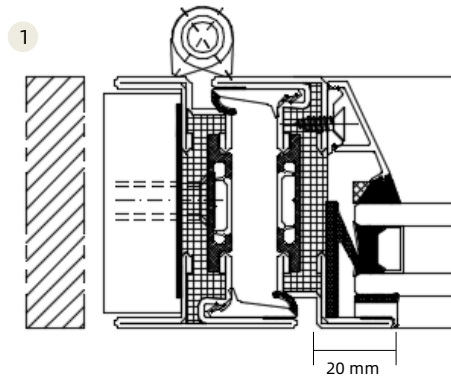


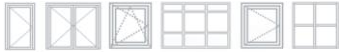
Residential & Commercial-Partitions & Doors





Residential & Commercial-Doors





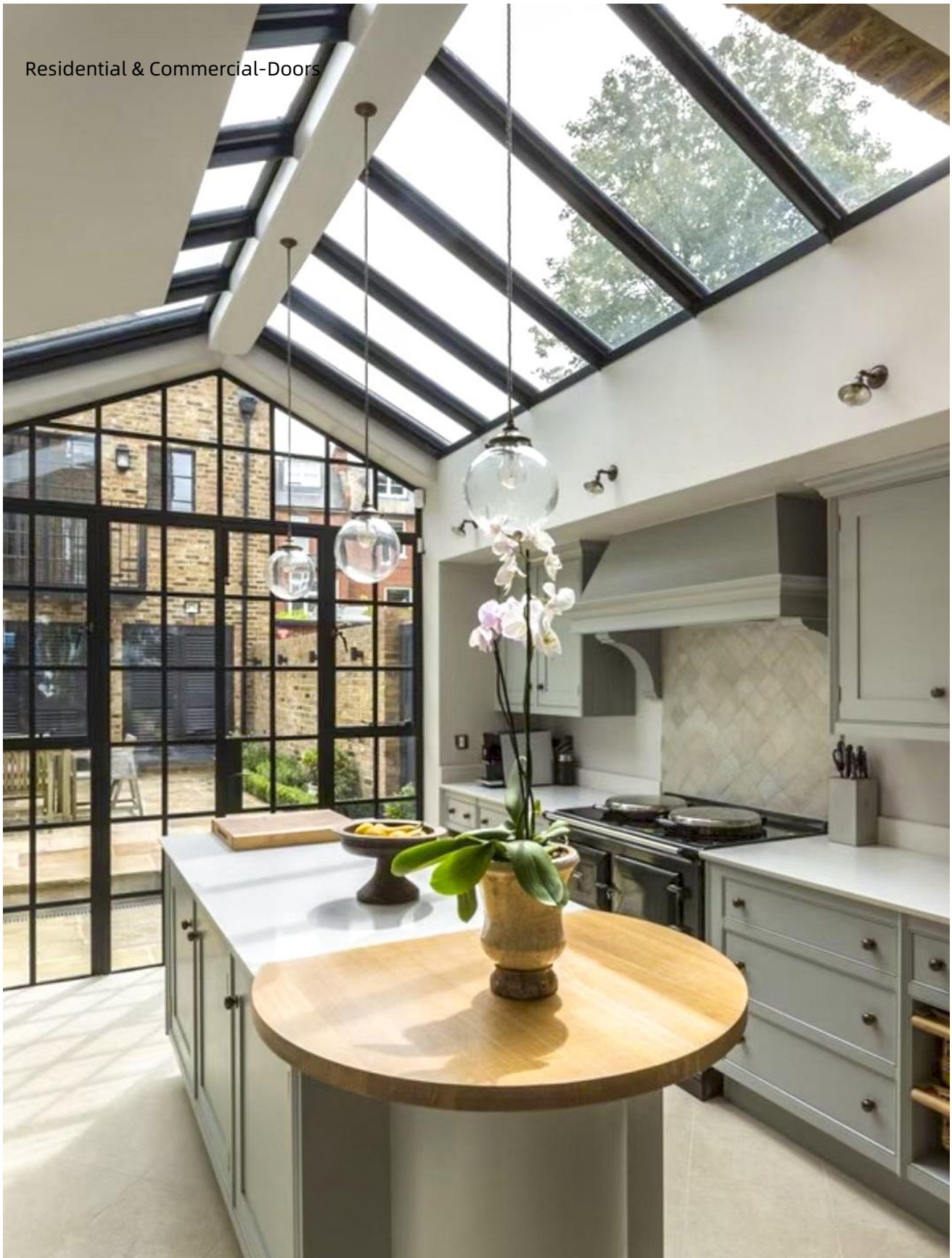
Residential & Commercial-Doors

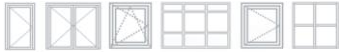


SLIM window and door systems come with standard hardware, however we will be glad to engineer customise solutions for special designs.



Residential & Commercial-Doors





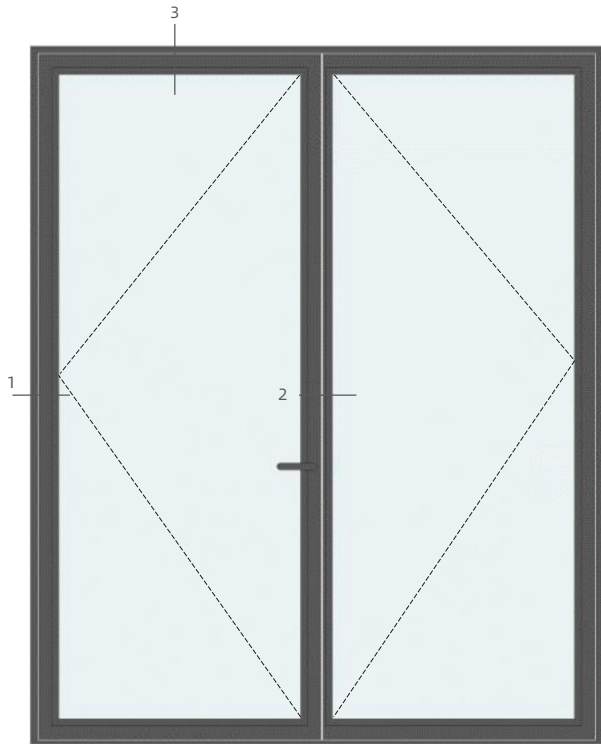
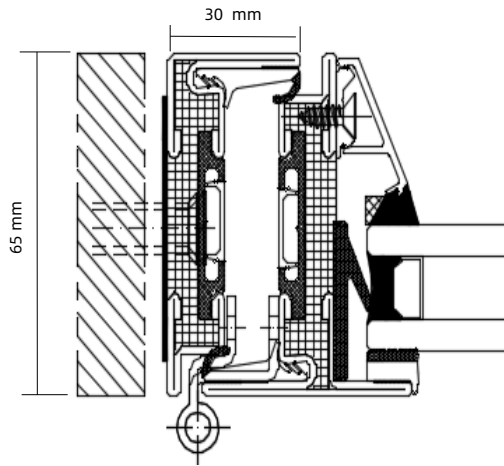
Residential & Commercial-Doors



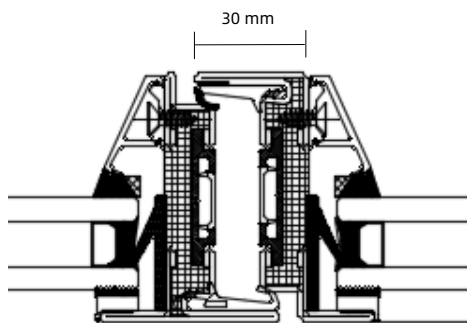


Residential & Commercial -Windows

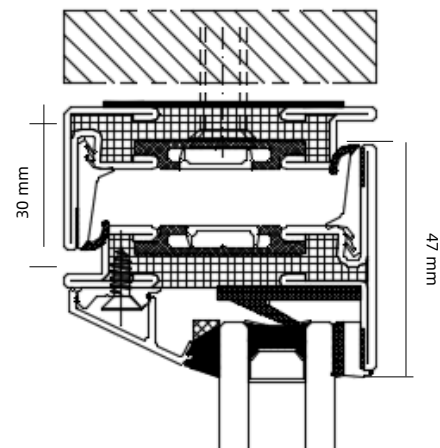
1

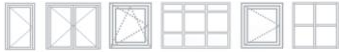


2

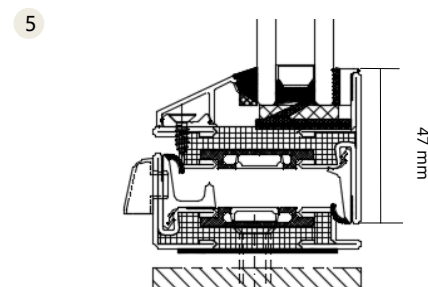
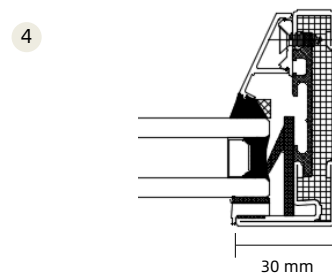
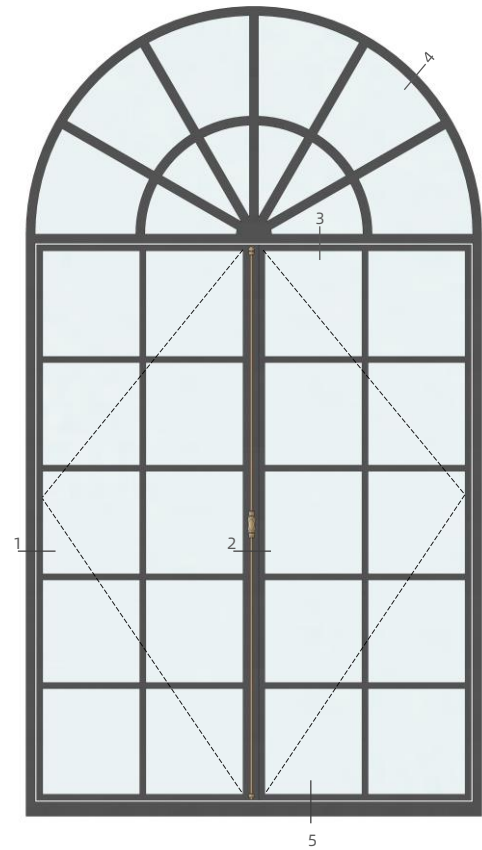
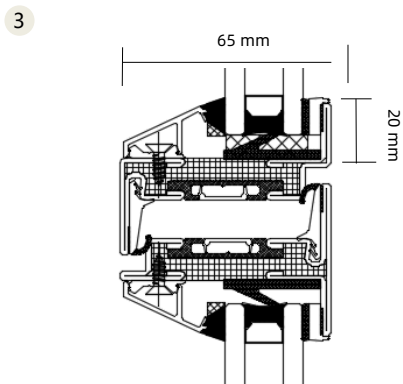
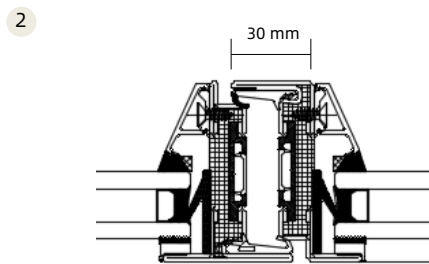
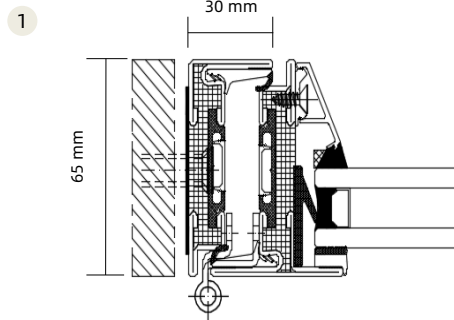


3



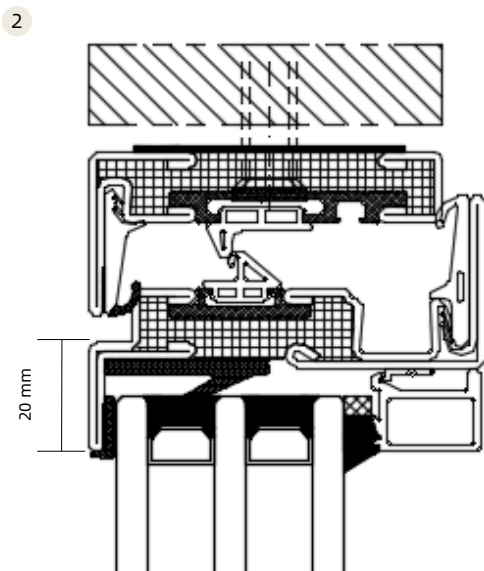
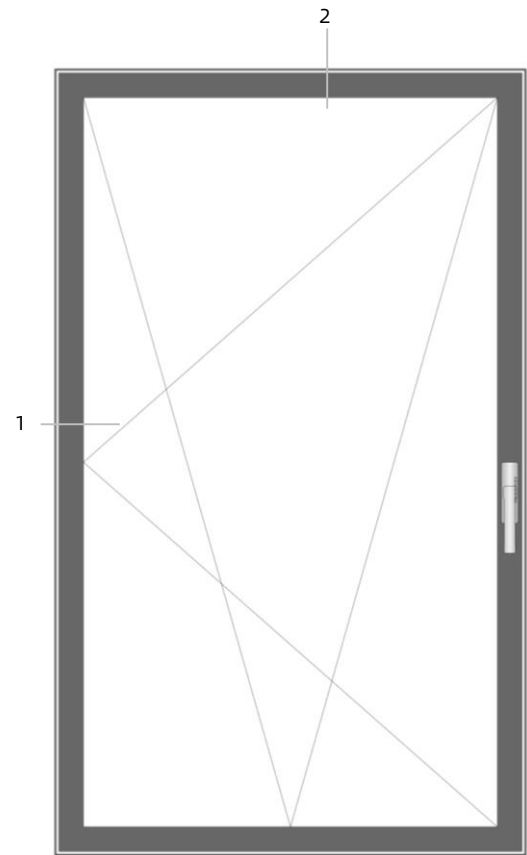
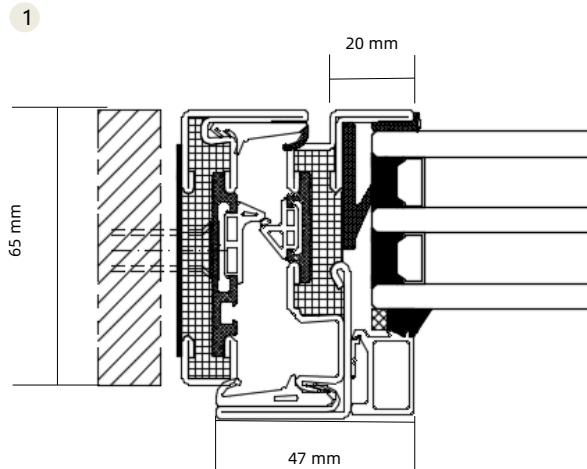


Residential & Commercial -Windows



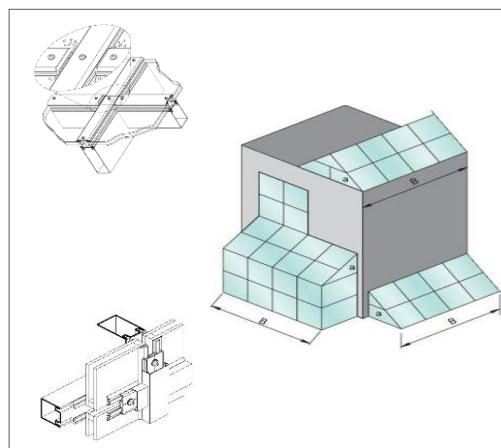


Residential & Commercial -Windows



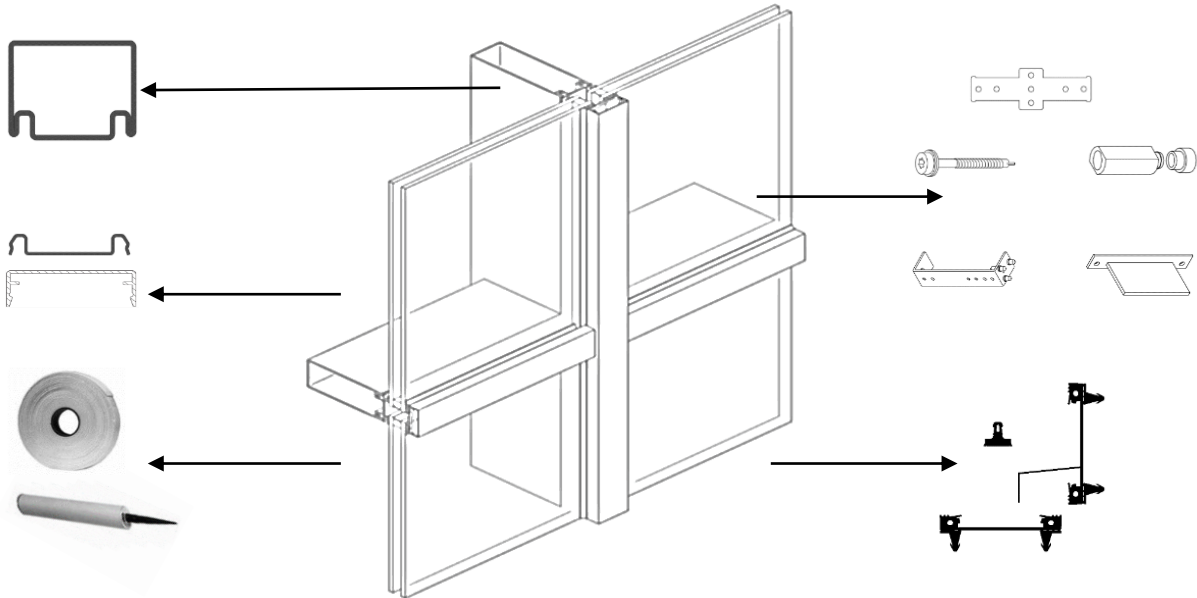


Residential & Commercial - Sunroom





Residential & Commercial - Sunroom



Sunroom/roof curtain wall product structure split diagram







Residential & Commercial - Sunroom



Residential & Commercial Doors





Residential & Commercial-Doors

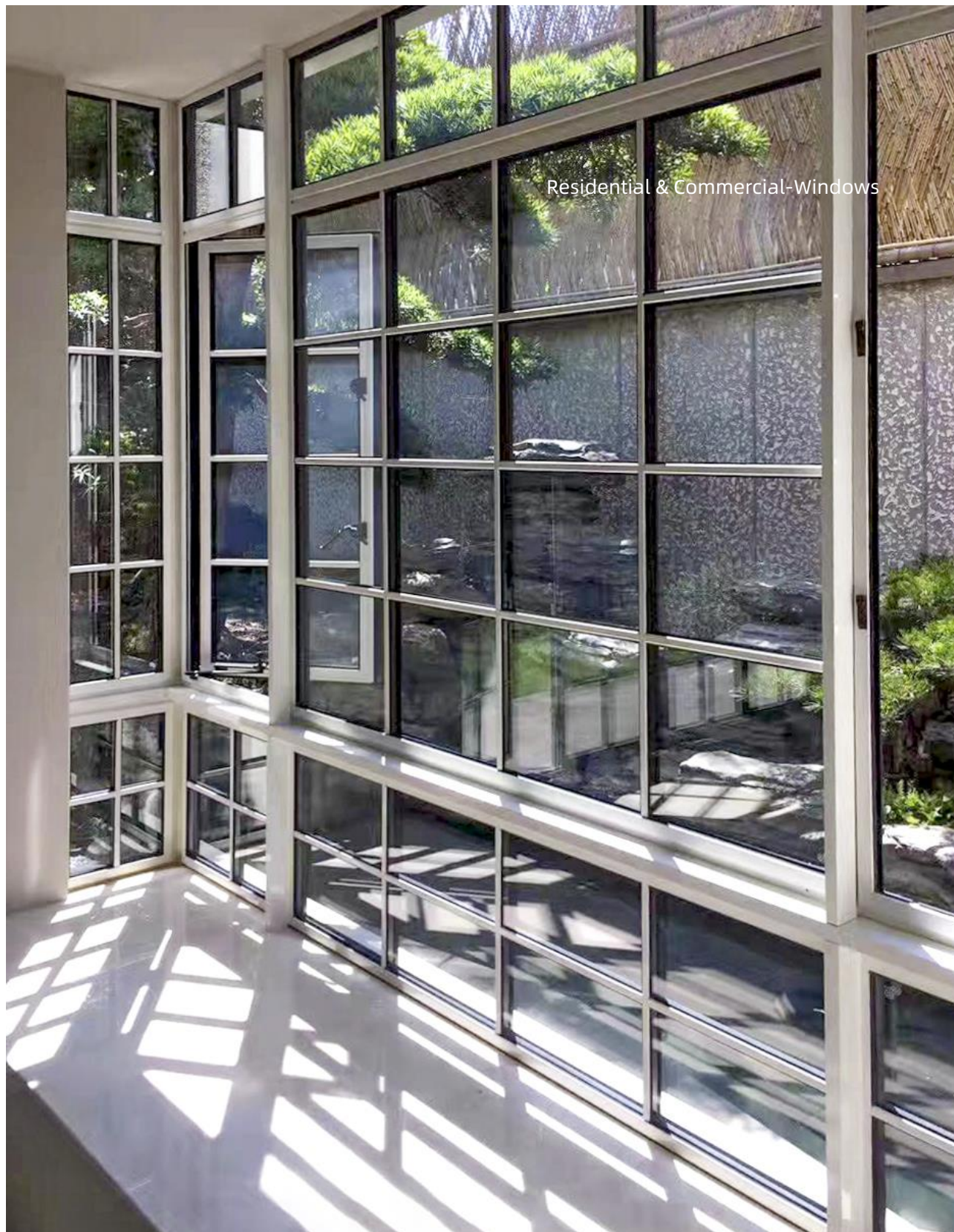




Residential & Commercial-Windows

SLIM has a very slim sightline which is identical to the classical steel profiles of historic buildings. However, the SLIM profile now benefits from an insulated thermal break and well-designed sealing systems which ensure wind and water tightness and a comfortable interior climate. The SLIM profile system is ideal for renovating historical buildings that do not meet today's technological performance standards, while maintaining their authentic character. Thanks to SLIM steel window systems, heritage buildings can be made future-proof while still preserving their original appearance.







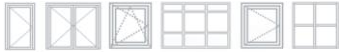
Residential & Commercial-Windows





Residential & Commercial-Doors





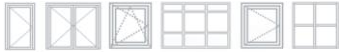
Residential & Commercial-Windows



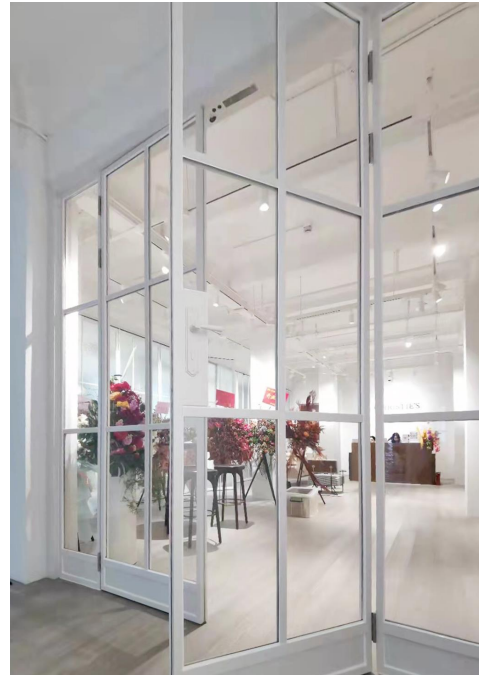


Residential & Commercial-Windows





Product application scenarios



Civil building

Exhibition

Villa

Heritage protection building

Featured indoor partition

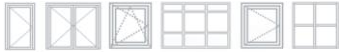
Retro architecture



SLIM product feature: Narrow face widths

SLIM series has extremely narrow face widths, and its conventional "cavity" is only 13 mm. This minimalist frame design can increase the light-passing area to the maximum extent and reduce visual impairment. Let "face" become "line".





SLIM product feature: Energy-saving and heat-insulating structure

SLIM series products are designed by cold-formed steel profiles and thermally broken structure. The structural combination of two materials can cut (or reduce) the heat transfer path to achieve the purpose of energy conservation. Cooperate with multi-cavity energy-saving glass to form a system with excellent thermal insulation performance to meet the strict national energy-saving requirements.

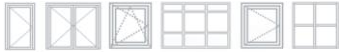




SLIM product feature: Rich extensible forms

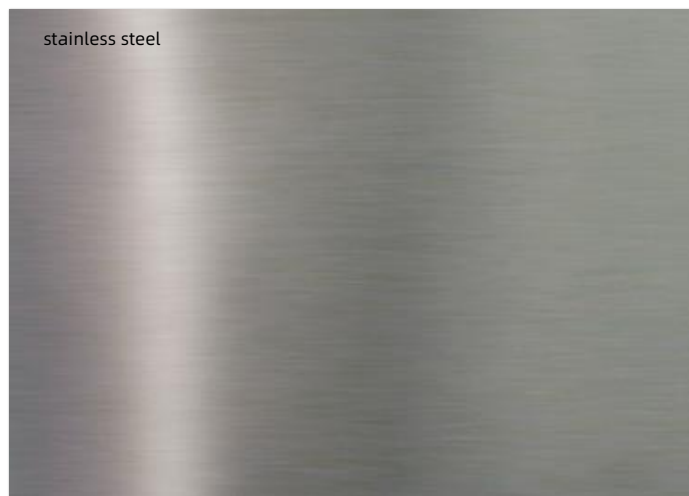
SLIM series can realize door, window, partition and other product forms. In these styles, each class has various fractals and makes various styles. SLIM is definitely the legendary "all-round player" from the penetration of all glass to the matching of metal plates, from the retro arc to the exquisite chess pattern, and then there are all kinds of hardware, all kinds of pressing lines and all kinds of glass.





SLIM product feature: Surface Technology Blooms "Color"

SLIM profiles has 3 materials available in steel, stainless steel, brass .Its surface in addition to the commonly fluorocarbon spray black, gray, it can also be made of imitation of copper wire drawing, brass wire drawing and other special surface texture, in order to apply to different architectural styles.



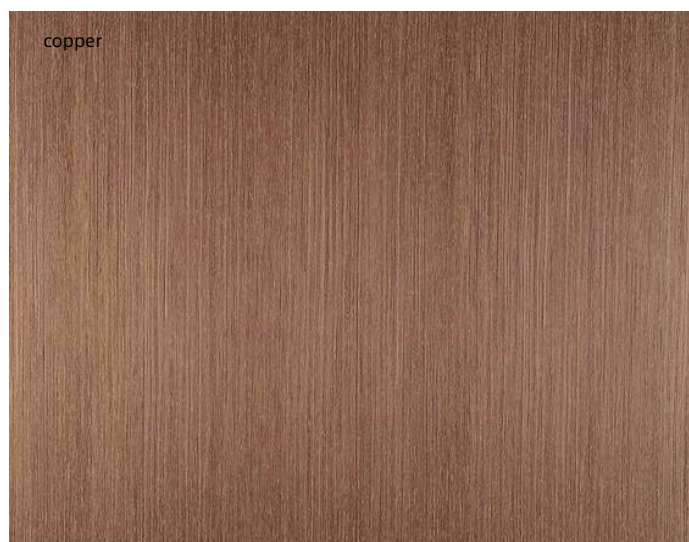
stainless steel



fluorocarbon spray black



fluorocarbon spray gray



copper



brass



Test Results

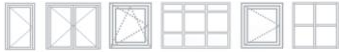


Number	Characteristic	Result/ Verdict
1	Air permeability	Class 4
2	Water tightness	Class 9A (600Pa)
3	Wind load resistance	Class C4
4	Thermal transmittance	Uw=1.48

for the products
"SLIM65 window"

are conducted by the accredited test lab on behalf of TÜV Rheinland Nederland, acting as Notified Body (NB 0336) for the products. The Initial type testing have been finished with positive results as,

Req. Nr.	Characteristic	Result / Verdict
4.2	Resistance to wind load	Class C4
4.5	Water tightness	Class 9A
4.12	Thermal transmittance	Uw=1.48
4.14	Air permeability	Class 4

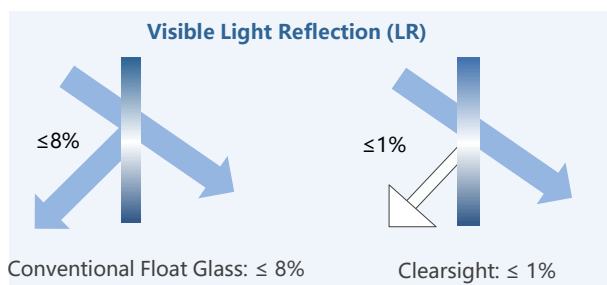


AGC- Clearsight glass



KEY FEATURES OF CLEARSIGHT

- Anti-reflective glass
- Significantly lower light reflection: $\leq 1\%$ instead of 8%
- Optimised vision and clarity
- Highest light transmission possible
- The best aesthetics and colour rendering index to see objects through glass
- A durable coating suitable for both interior and exterior applications
- 10 years warranty



Clearvision	Clearsight Single-sided AR	Clearsight Double-sided AR
	or	or
LR = 8% LT = 92 %	LR = 4.6% LT = 95 %	LR $\leq 1\%$ LT = 98 %



AGC-Clearsight glass





AGC-Easy clean glass



Keeping your windows and conservatories clean becomes much easier with Planibel Easy Clear and Planibel Easy Blue. How? It's simple: the special coating applied on the glazing works in two steps by using daylight (5 to 7 days) to destroy organic dirt, followed by rain to remove it.

This makes it the perfect choice for conservatories, skylights and windows. Moreover, Planibel Easy Clear and Planibel Easy Blue can be combined in double glazing with other AGC products, such as low-e glass.



UV Activated Layer



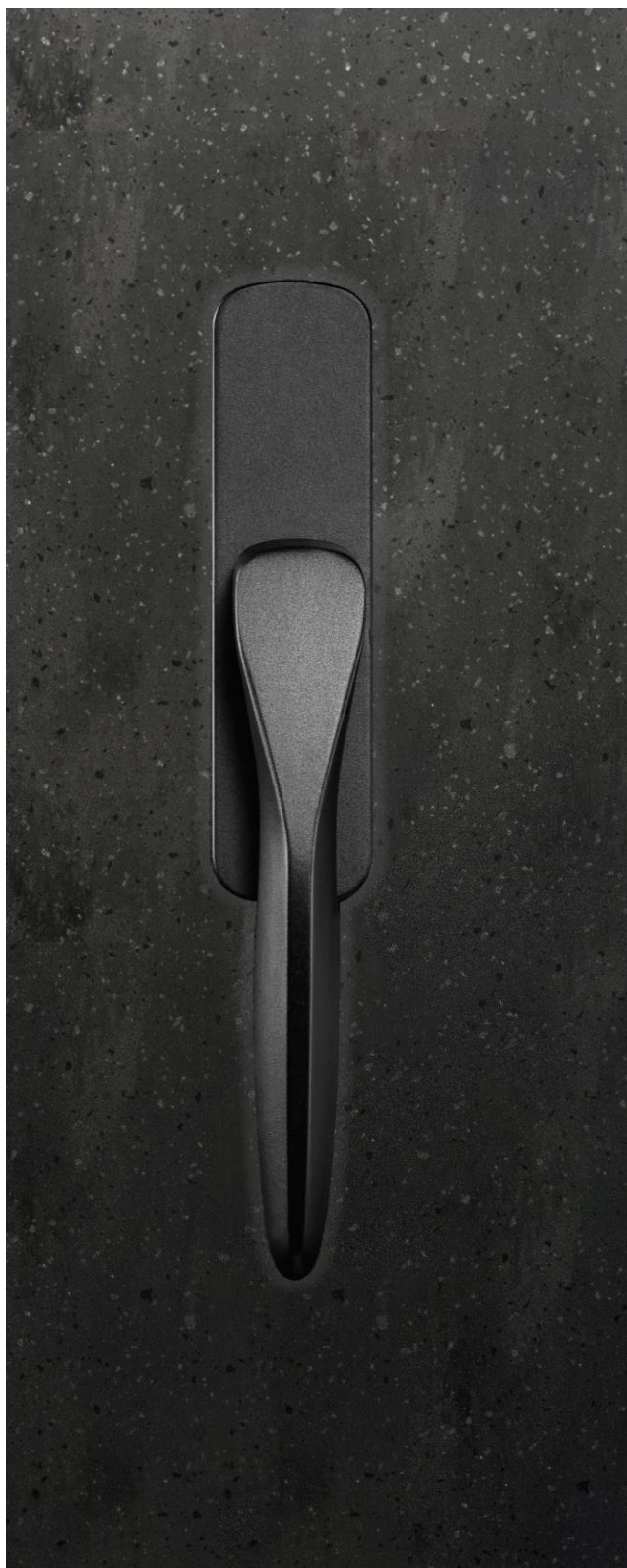
Organic deposits are destroyed



Rain washed it away

SLIM-Hardware is recommended



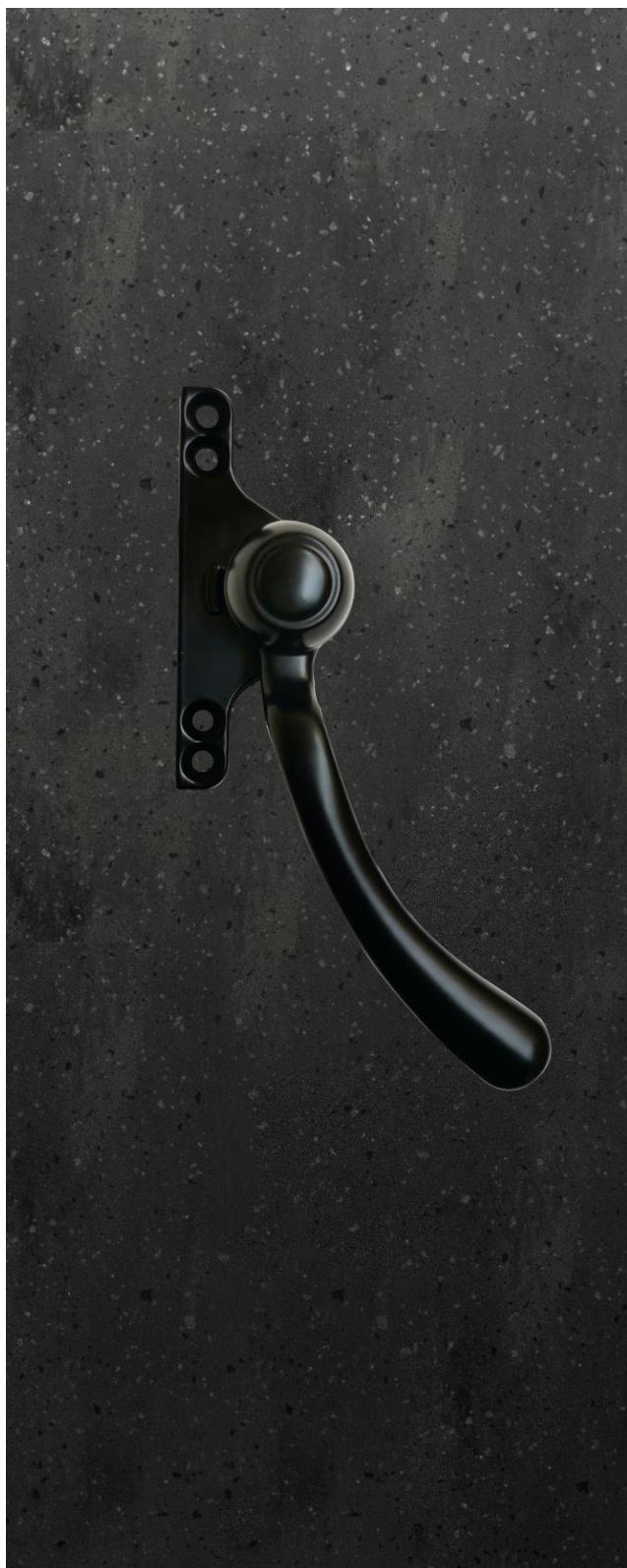


NO. : MY 108/109

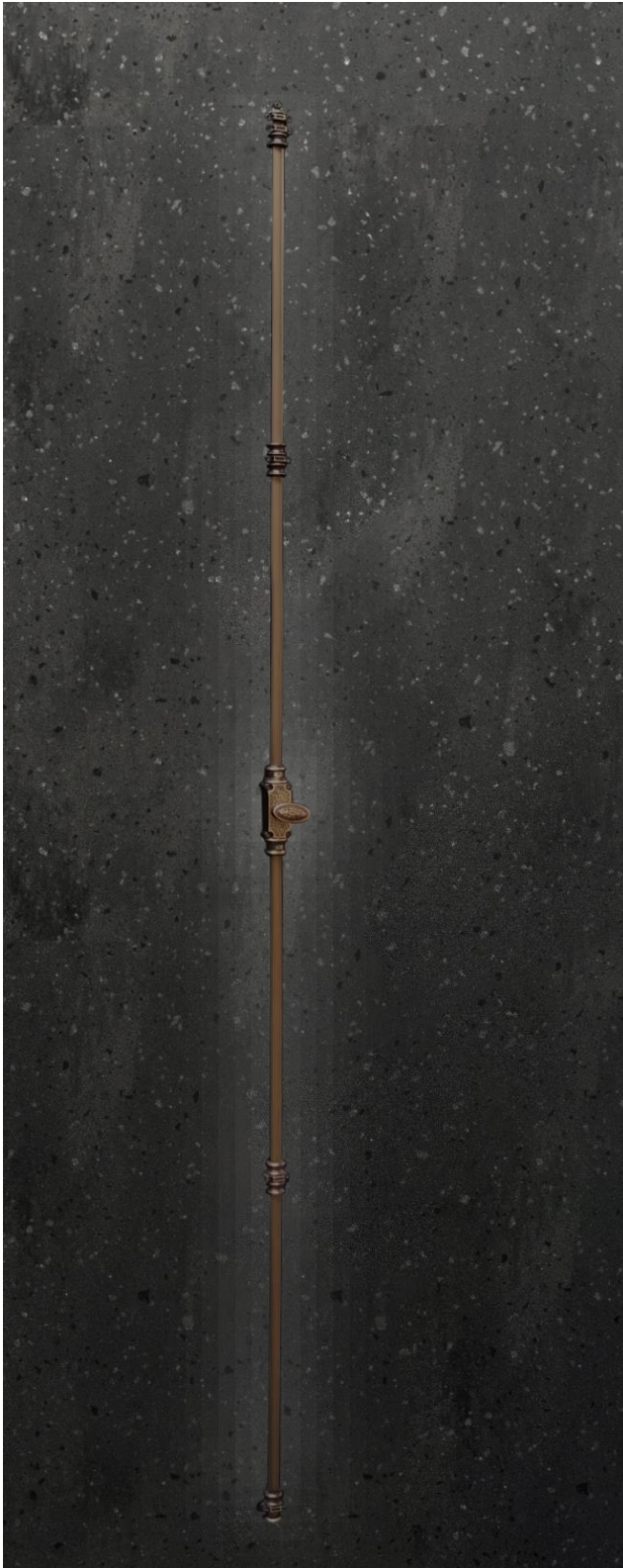
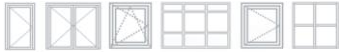
Applicable: SLIM 65

Style: Light the luxury of minimalism

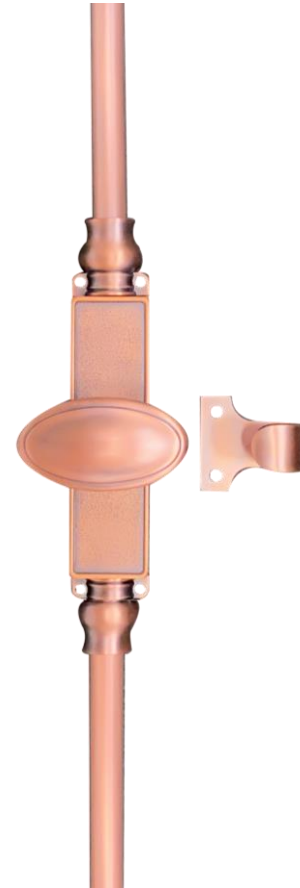
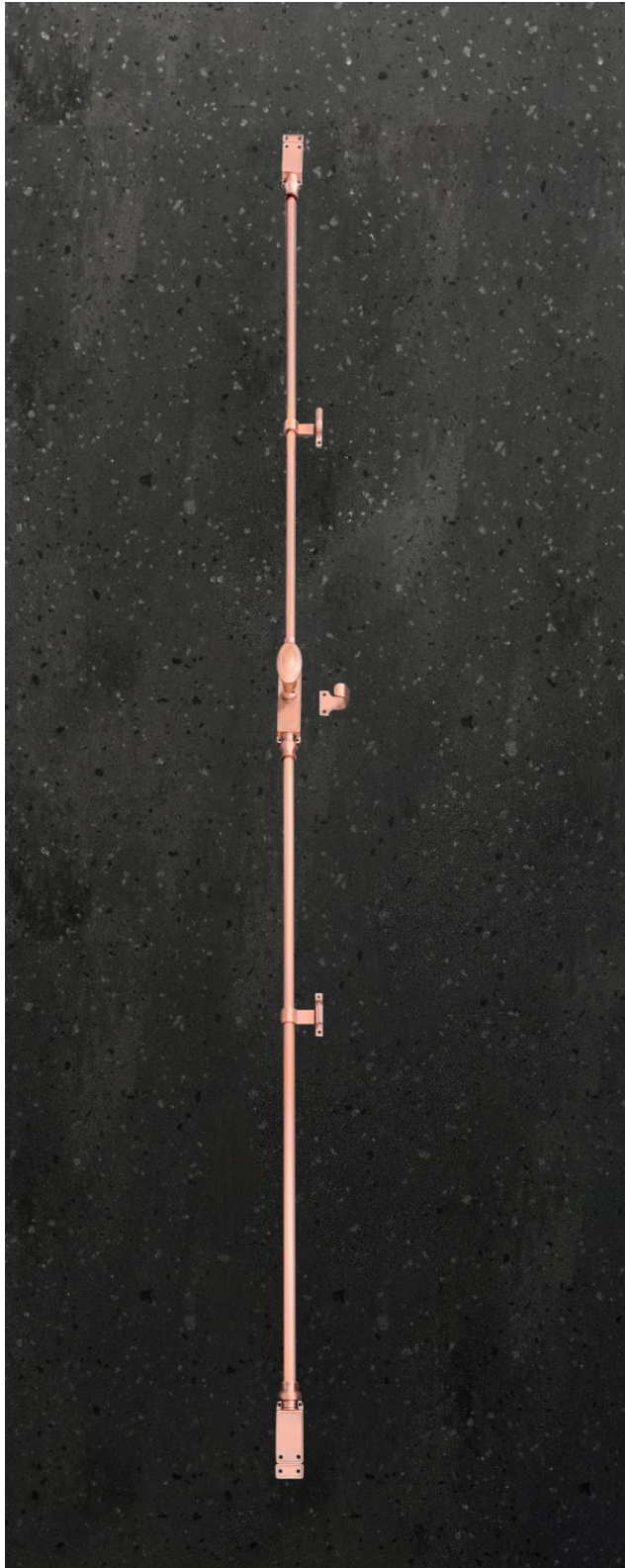
Handle color: Blank black



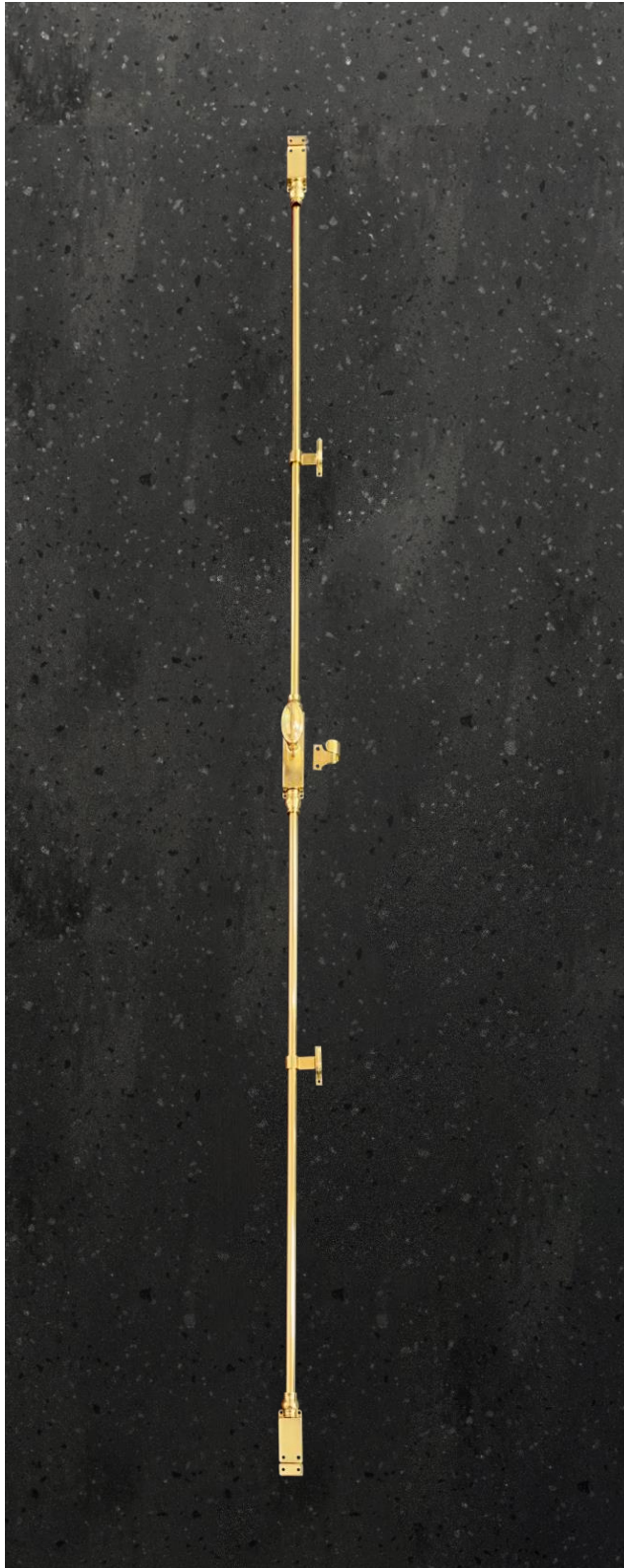
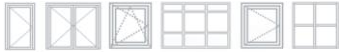
NO. : MY 002/003
Applicable: SLIM 65
Style: classic vintage
Handle color: antique brass



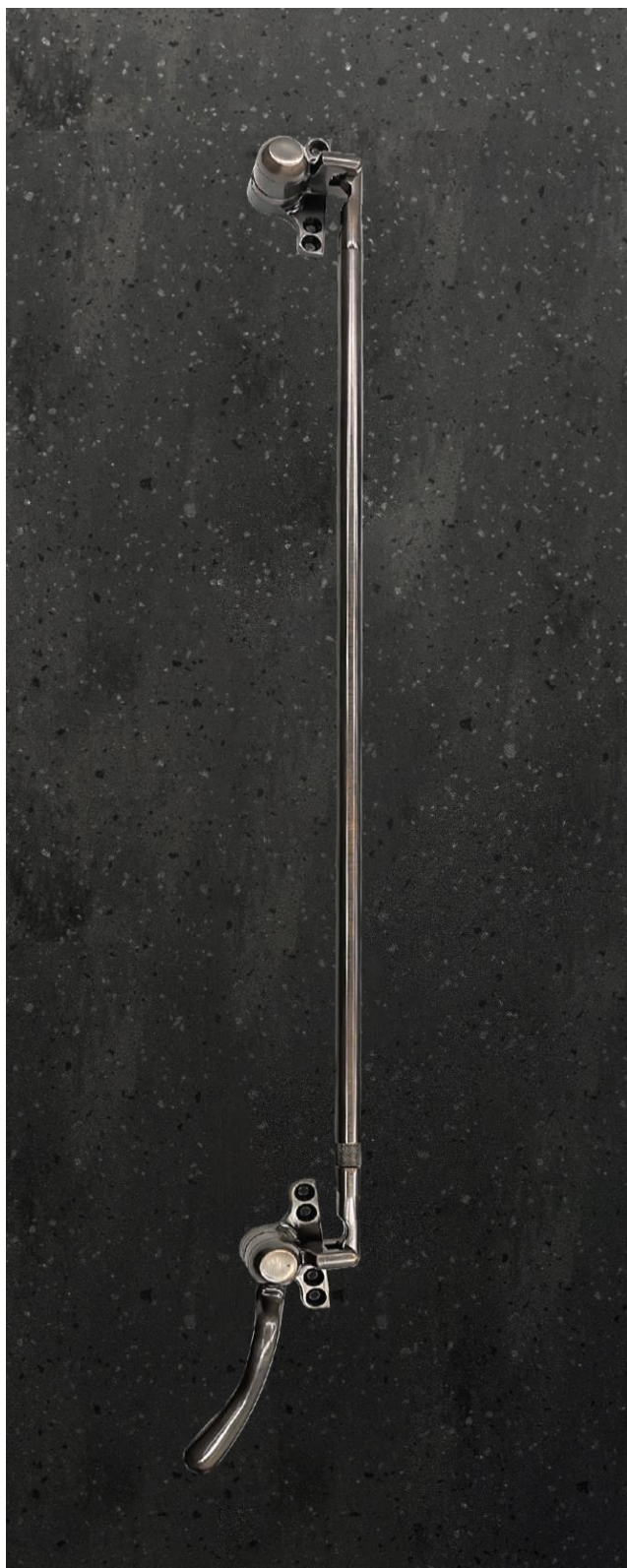
NO. : MY 004/005
 Applicable : SLIM 65
 Opening: swing-in
 Style: classic vintage
 Handle color: antique brass



NO. : MY 009/010
 Applicable: SLIM 65
 Style: classic vintage
 Handle color: Pink Gold



NO. : MY 009/010
Applicable: SLIM 65
Style: classic vintage
Handle color: gilding brass



1

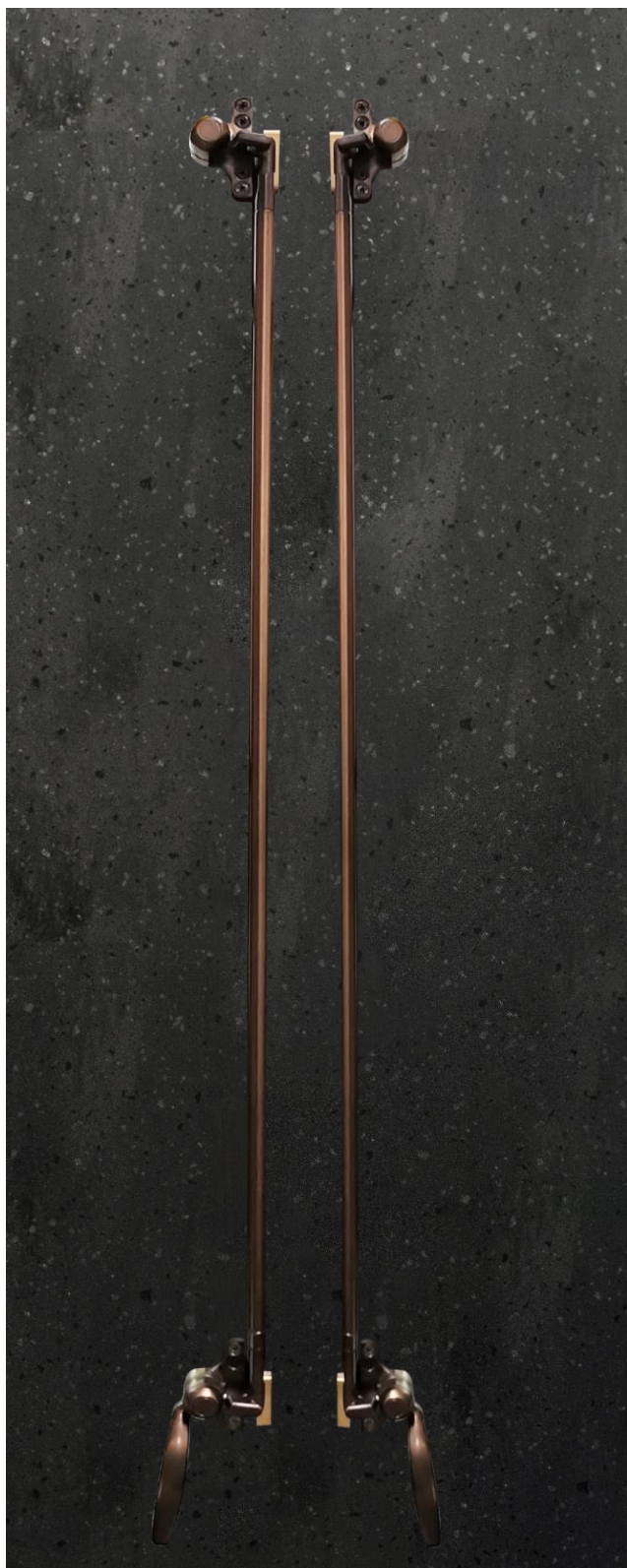


2



3

NO. : ① MY 018 ② MY 036
 ③ MY 016/017 and MY 020/021/022
 Applicable: SLIM 65
 Style: classic vintage
 Handle color: antique brass



1



2



3

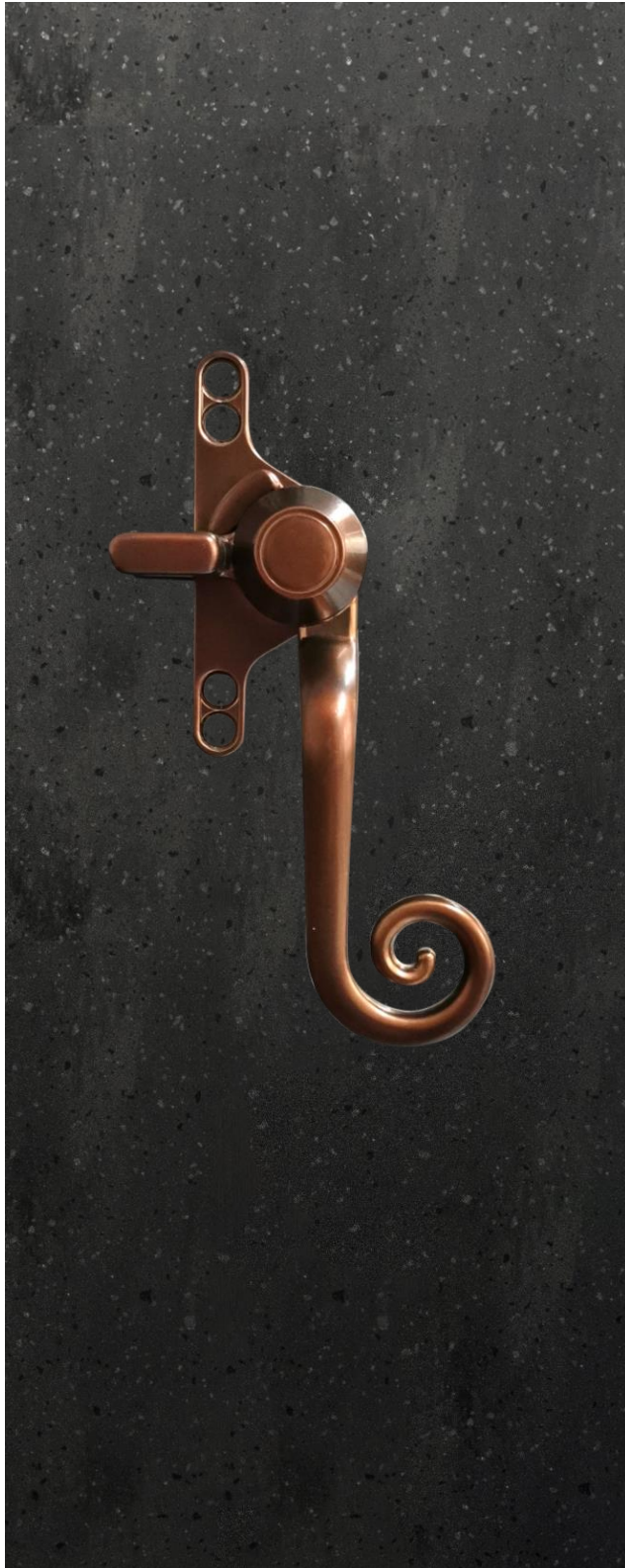
NO. : ① MY 023/024 and MY 028/029/030

② MY 034 ③ MY 035

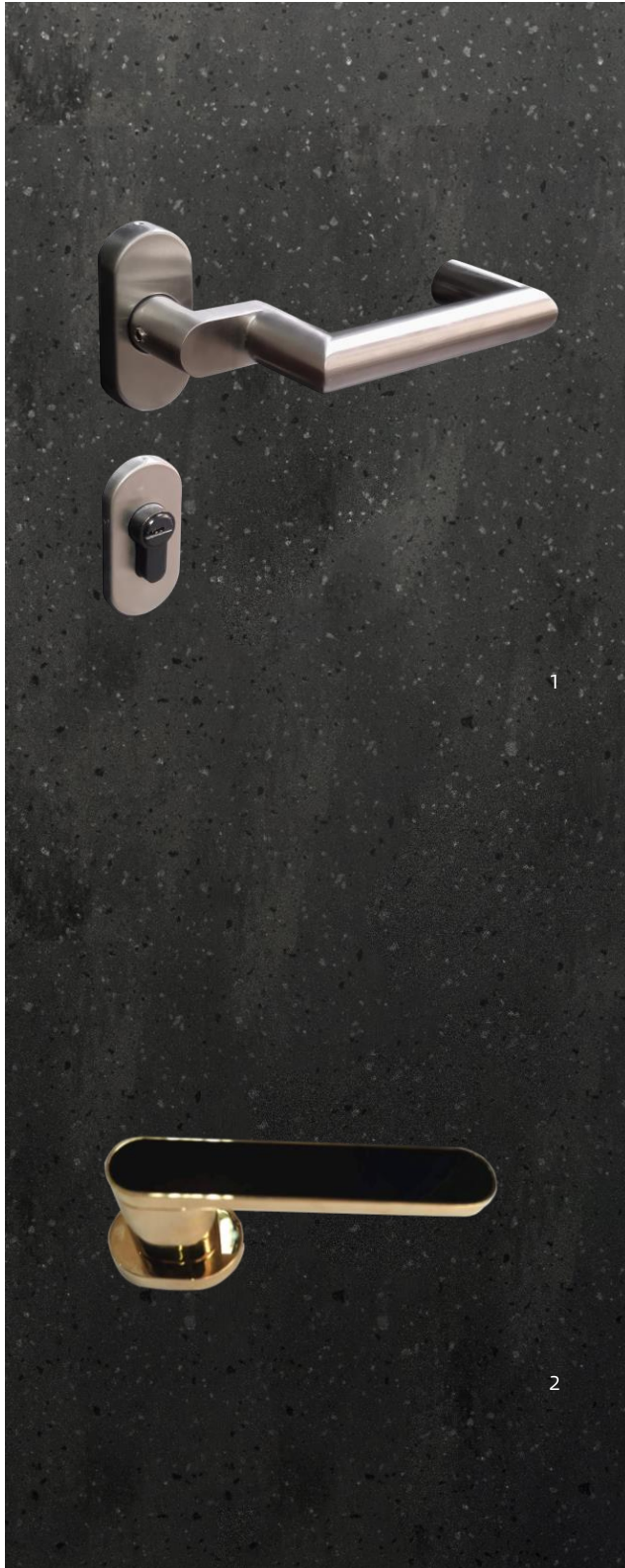
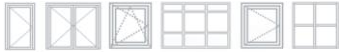
Applicable: SLIM 65

Style: classic vintage

Handle color: antique brass



NO. : MY 031/032
Applicable: SLIM 65
Style: classic vintage
Handle color: antique brass



1

2



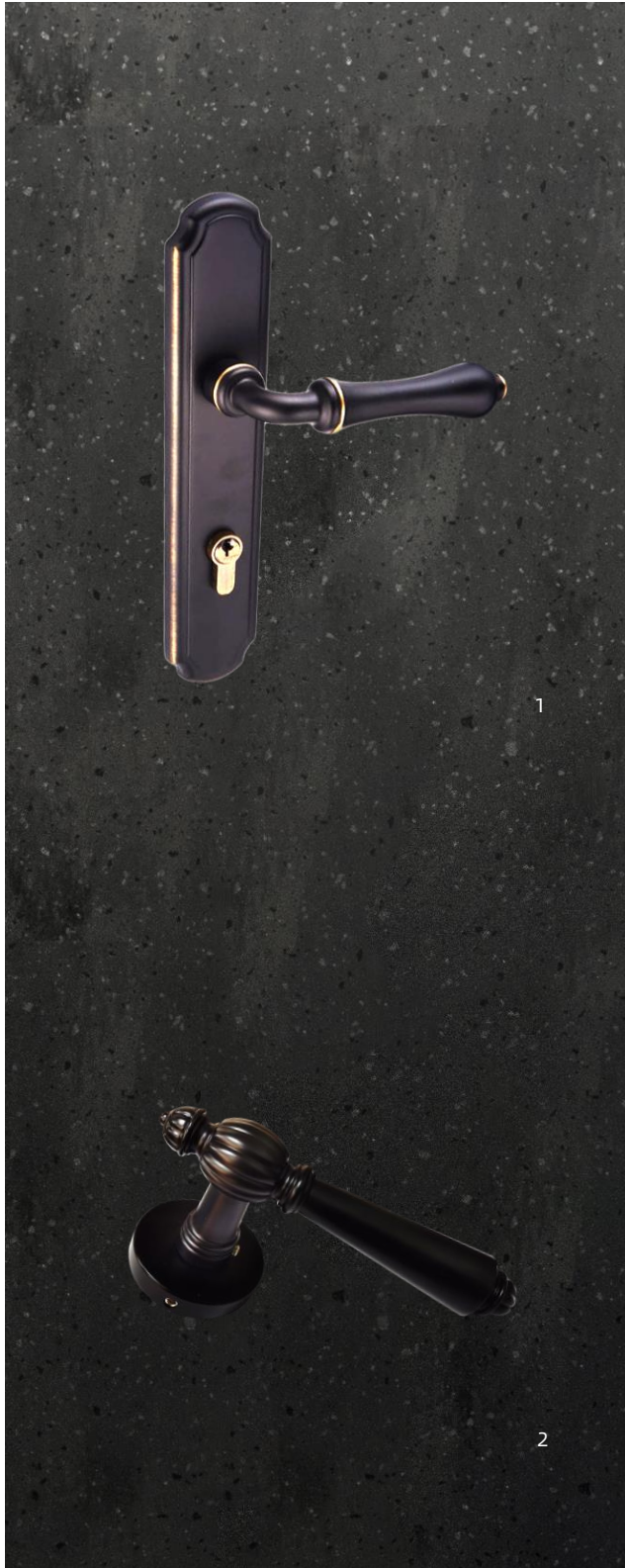
3

NO. : ① MY 082 ② MY 087/088 ③ MY 107

Applicable : SLIM 65

Style: minimalist and light luxury

Handle color: ①stainless steel ②black ③Gold black



3

NO. : ① MY 089/090 ② MY 106 ③ MY 105

Applicable: SLIM 65 steel door system

Style: classic vintage

Handle color: ①antique ②antique ③fantastic black

mm. Inje
and win
narrow

taoyini@eng-pda.com

www.international-pda.com